

# INFINITY

TAVOLO | TABLE

Design S. Bigi

2009



# INFINITY 1 BASE C

Design S. Bigi

TAVOLO | TABLE

2009

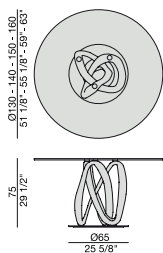
Tavolo da pranzo con base centrale in massello di noce canaletta o frassino montata su una piastra in metallo e piano in cristallo temperato (spessore mm.12).

Dining-table with base in solid canaletta walnut or ash fixed on a metal ring and tempered glass top (thickness mm. 12).

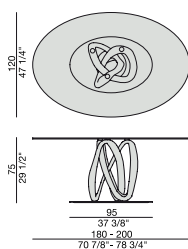
Ess-Tisch mit Gestell aus massivem Nussbaum Canaletta oder Esche auf eine Metallplatte und ESG-Glasplatte (Stärke mm. 12).

Table à manger avec piétement en noyer canaletta ou frêne massif fixé sur une plaque en métal et plateau en verre trempé (épaisseur mm. 12).

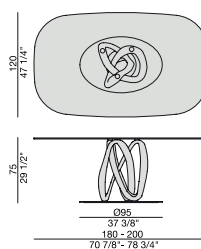
Mesa de comedor con base de nogal canaletta o fresno macizo montada sobre de un disco de metal y tapa en cristal templado (espesor mm. 12).



TONDO 1 BASE C



ELLITTICO 1 BASE C



OVALE 1 BASE C

# INFINITY 2 BASI C

Design S. Bigi

TAVOLO | TABLE

2009

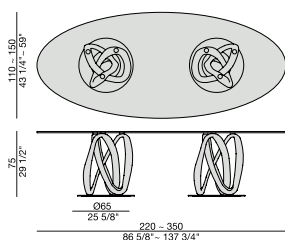
Tavolo da pranzo con due basi in massello di noce canaletta o frassino montate su piastre in metallo e piano in cristallo temperato (spessore mm. 12).

Dining-table with two bases in solid canaletta walnut or ash fixed on metal rings and tempered glass top (thickness mm. 12).

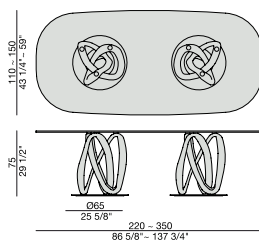
Ess-Tisch mit zwei Gestellen aus massivem Nussbaum Canaletta oder Esche auf Metallplatten und ESG-Glasplatte (Stärke mm. 12).

Table à manger avec deux piétements en noyer canaletta ou frêne massif fixés sur plaques en métal et plateau en verre trempé (épaisseur mm. 12).

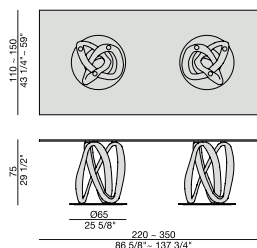
Mesa de comedor con dos bases de nogal canaletta o fresno macizo montadas sobre de discos de metal y tapa en cristal templado (espesor mm. 12).



ELLITTICO 2 BASI C



OVALE 2 BASI C



RETTANGOLARE 2 BASI C

# INFINITY 1/2 BASI C

Design S. Bigi

TAVOLO | TABLE

2009

## Essenze | Wood



FRASSINO NATURALE  
Natural Ash



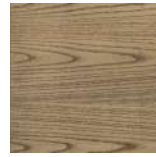
FRASSINO  
Ash  
tinto/stained moka



FRASSINO  
Ash  
tinto/stained  
canaletta walnut



FRASSINO  
Ash  
tinto/stained wengé



FRASSINO  
Ash  
tinto/stained canapa



FRASSINO  
Ash  
tinto/stained caffè



NOCE CANALETTA  
Canaletta Walnut



NOCE CANALETTA  
Canaletta Walnut  
tinto/stained moka

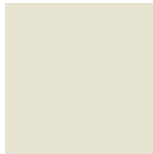


NOCE CANALETTA  
Canaletta Walnut  
tinto/stained wengé

## Laccato opaco poro aperto/chiuso | Matt Lacquered open/closed pore



BIANCO  
White  
(RAL 9016)



AVORIO  
Ivory  
(RAL 1013)



ARGILLA  
Argilla  
(RAL 7006)



PIOMBO  
Piombo  
(NCS S5005G20Y)



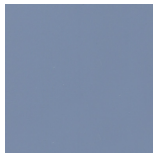
NERO  
Black  
(RAL 9005)



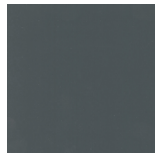
GRANATA  
Granata  
(NCS S4050Y90R)



PISTACCHIO  
Pistacchio  
(PANTONE 5825)



AVIO  
Avio  
(PANTONE 5415)

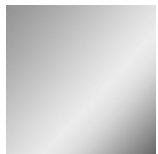


IRON  
Iron  
(RAL 7011)



CIOCCOLATO  
Chocolate  
(RAL 8019)

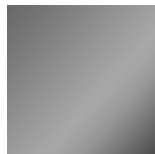
## Metallo | Metal



CROMATO  
Chrome plated



GRIGIO PELTRO  
Grey Pewter



CROMO NERO  
Black Chromed

## Cristallo | Glass



TRASPARENTE  
Transparent



FUMÉ  
Smoked



# INFINITY 1 BASE L

Design S. Bigi

TAVOLO | TABLE

2009

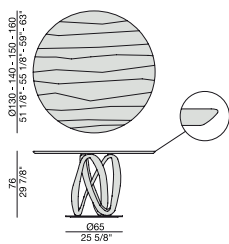
Tavolo da pranzo in massello di noce canaletta con base centrale montata su una piastra in metallo.

Dining-table in solid canaletta walnut with central base fixed on a metal ring.

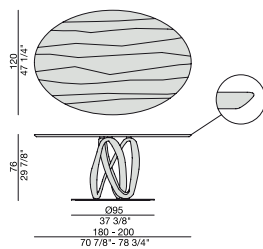
Ess-Tisch aus massivem Nussbaum Canaletta mit Gestell auf eine Metallplatte.

Table à manger en noyer canaletta massif avec piètement fixé sur une plaque en métal.

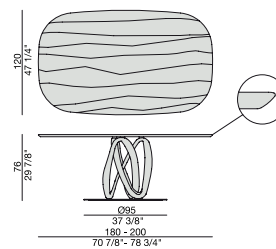
Mesa de comedor en nogal canaletta macizo con base montada sobre de un disco de metal.



TONDO 1 BASE L



ELLITTICO 1 BASE L



OVALE 1 BASE L

# INFINITY 2 BASI L

Design S. Bigi

TAVOLO | TABLE

2009

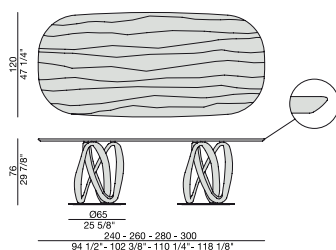
Tavolo da pranzo in massello di noce canaletta con base centrale montata su una piastra in metallo.

Dining-table in solid canaletta walnut with central base fixed on a metal ring.

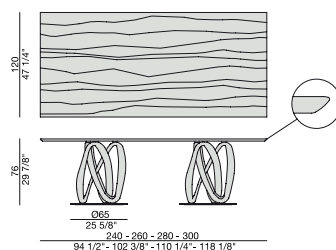
Ess-Tisch aus massivem Nussbaum Canaletta mit Gestell auf eine Metallplatte.

Table à manger en noyer canaletta massif avec piètement fixé sur une plaque en métal.

Mesa de comedor en nogal canaletta macizo con base montada sobre de un disco de metal.



OVALE 2 BASI L

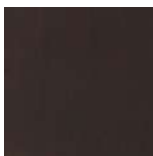


RETTANGOLARE 2 BASI L

## Essenze | Wood



NOCE CANALETTA  
Canaletta Walnut



NOCE CANALETTA  
Canaletta Walnut  
tinto/stained moka



NOCE CANALETTA  
Canaletta Walnut  
tinto/stained wengé

## Laccato opaco poro chiuso | Matt Lacquered closed pore



BIANCO  
White  
(RAL 9016)



AVORIO  
Ivory  
(RAL 1013)



ARGILLA  
Argilla  
(RAL 7006)



PIOMBO  
Piombo  
(NCS S5005G20Y)



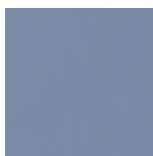
NERO  
Black  
(RAL 9005)



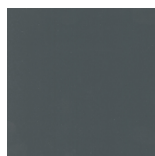
GRANATA  
Granata  
(NCS S4050Y90R)



PISTACCHIO  
Pistacchio  
(PANTONE 5825)



AVIO  
Avio  
(PANTONE 5415)



IRON  
Iron  
(RAL 7011)

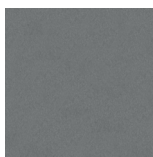


CIOCCOLATO  
Chocolate  
(RAL 8019)

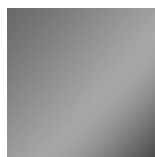
## Metallo | Metal



CROMATO  
Chrome plated



GRIGIO PELTRO  
Grey Pewter



CROMO NERO  
Black Chromed

# INFINITY TONDO ROCK

Design S. Bigi

TAVOLO | TABLE

2009

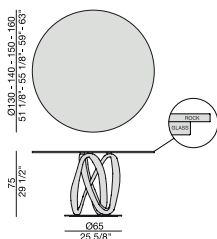
Tavolo da pranzo con base centrale in massello di noce canaletta o frassino montata su una piastra in metallo e piano in Rock (spessore mm. 6) con sottopiano di supporto in cristallo temperato (spessore mm. 10).

Dining-table with base in solid canaletta walnut or ash fixed on a metal ring and top in Rock (thickness mm. 6) with under-top in tempered glass (thickness mm. 10).

Ess-Tisch mit Gestell aus massivem Nussbaum Canaletta oder Esche auf eine Metallplatte und Platte aus Rock (Stärke mm. 6). Untere Platte aus Glas (Stärke mm. 10).

Table à manger avec piétement en noyer canaletta ou frêne massif fixé sur une plaque en métal et plateau en Rock (épaisseur mm. 6) avec sous-plateau en verre trempé (épaisseur mm. 10).

Mesa de comedor con base de nogal canaletta o fresno macizo montada sobre de un disco de metal y tapa en Rock (espesor mm. 6). Soporte para tapa en cristal templado (espesor mm. 10).



TONDO 1 BASE ROCK



# INFINITY 2 BASI ROCK

Design S. Bigi

TAVOLO | TABLE

2009

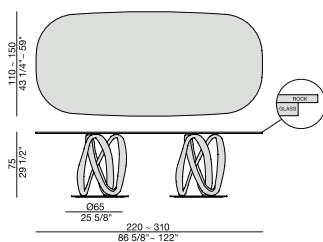
Tavolo da pranzo con due basi in massello di noce canaletta o frassino montate su piastre in metallo e piano in Rock (spessore mm. 6) con sottopiano di supporto in cristallo temperato (spessore mm. 10).

*Dining-table with two bases in solid canaletta walnut or ash fixed on metal rings and top in Rock (thickness mm. 6) with under-top in tempered glass (thickness mm. 10).*

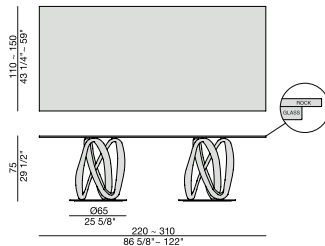
*Ess-Tisch mit zwei Gestellen aus massivem Nussbaum Canaletta oder Esche auf Metallplatten und Platte aus Rock (Stärke mm. 6). Untere Platte aus Glas (Stärke mm. 10).*

*Table à manger avec deux piétements en noyer canaletta ou frêne massif fixés sur plaques en métal et plateau en Rock (épaisseur mm. 6) avec sous-plateau en verre trempé (épaisseur mm. 10).*

*Mesa de comedor con dos bases de nogal canaletta o fresno macizo montadas sobre de discos de metal y tapa en Rock (espesor mm. 6). Soporte para tapa en cristal templado (espesor mm. 10).*



**OVALE 2 BASI ROCK**

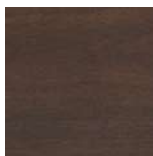


**RETTANGOLARE 2 BASI ROCK**

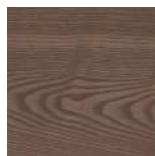
## Essenze | Wood



FRASSINO NATURALE  
Natural Ash



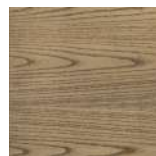
FRASSINO  
Ash  
tinto/stained moka



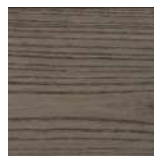
FRASSINO  
Ash  
tinto/stained  
canaletta walnut



FRASSINO  
Ash  
tinto/stained wengé



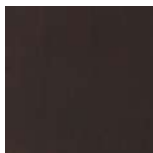
FRASSINO  
Ash  
tinto/stained canapa



FRASSINO  
Ash  
tinto/stained caffè



NOCE CANALETTA  
Canaletta Walnut



NOCE CANALETTA  
Canaletta Walnut  
tinto/stained moka



NOCE CANALETTA  
Canaletta Walnut  
tinto/stained wengé

## Laccato opaco poro aperto/chiuso | Matt Lacquered open/closed pore



BIANCO  
White  
(RAL 9016)



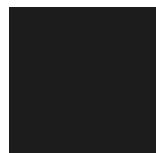
AVORIO  
Ivory  
(RAL 1013)



ARGILLA  
Argilla  
(RAL 7006)



PIOMBO  
Piombo  
(NCS S5005G20Y)



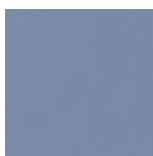
NERO  
Black  
(RAL 9005)



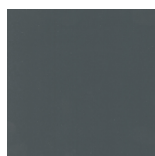
GRANATA  
Granata  
(NCS S4050Y90R)



PISTACCHIO  
Pistacchio  
(PANTONE 5825)



AVIO  
Avio  
(PANTONE 5415)



IRON  
Iron  
(RAL 7011)

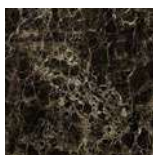


CIOCCOLATO  
Chocolate  
(RAL 8019)

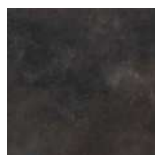
## Rock | Rock



CALACATTA  
Calacatta

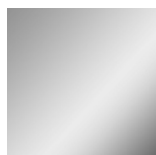


EMPERADOR  
Emperador



BLACK OXIDE  
Black Oxide

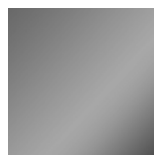
## Metallo | Metal



CROMATO  
Chrome plated



GRIGIO PELTRO  
Grey Pewter



CROMO NERO  
Black Chromed